



ADVICE FOR RESIDENTS

Householders are legally responsible for all household waste produced on their property. Most household waste can be disposed of in your bags or wheeled bin.

If you need to dispose of large items such as sofas, fridges there are several ways to do this legally .

- ❖ Take large items to your council run tip . Find out about opening times on line.
- ❖ Consider hiring a skip .They can be value for money and you don't need a permit if its on your own property.
- ❖ Leicester city council can dispose of your large waste items as part of the bulky waste collection service .
- ❖ You can subscribe to a garden waste collection for an annual fee.

Find out more at
www.lesswaste.org.uk

Advice for businesses

- Under the Environmental Protection Act, every business has a duty of care when it comes to dispose of it's waste. If you are not meeting your legal responsibilities it could result in a fine or imprisonment.

Here are a few tips

- It is a legal requirement for businesses to use a licensed waste carrier to remove their waste –check they are registered.
- If you run a business from home you will still need to dispose of your waste correctly - you should not use you home waste collection.
- Provide a written description of your waste to the company collection your waste
- Keep signed copies of transfer notes for 2 years .
- Take action if you think your waste is being mishandled by those who remove it you could be fined if your waste is fly tipped.

Find out more by visiting
www.rightwasterightplace.com

UP DATES

Bins left on the street.

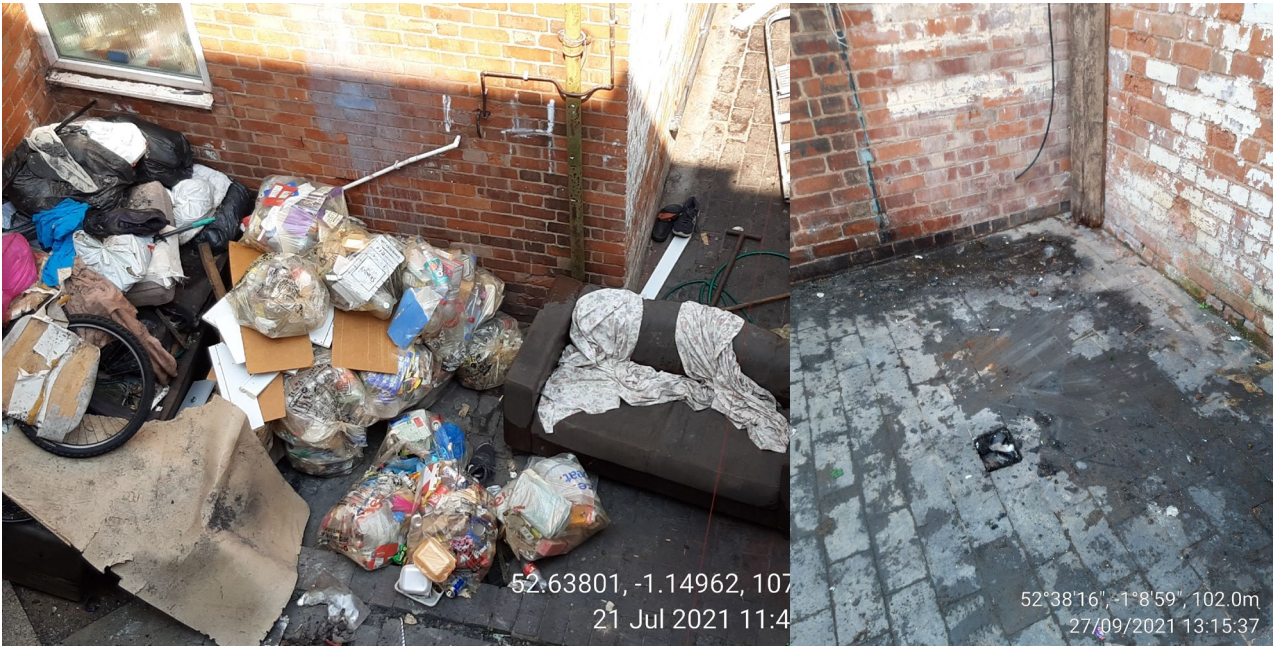
Currently I am working on reducing the number of bins being left on the street after collection day. Glenfield Road, Kirby Road, Wentworth Road, Bonchurch Street have all seen improvements the other streets that are being looked into are Carlisle, Henton, Mostyn and Warwick. With other streets being looked at later in the year.

Clearance of back yards.

After successful obtaining warrants from the magistrate court we have cleared back yards which were full of rubbish and causing a rodent problem for neighbours



CITY WARDEN SERVICES



Duty of care inspections

Some businesses in the ward have had their paper work checked in regards to how they dispose of their business waste 2 fixed penalty notices have been issued for non compliance 1 is currently under investigation.

Other news

We're appealing for donations of furniture, white goods and small electrical items to help Leicester residents in need through our Furniture Reuse scheme.

Collections are made by our charitable partners, the Leicestershire and Rutland Reuse Network (LRRN), and the service is free

To find out more visit

<https://leicester-shire-reuse-network.co.uk>

Or Please call 0330 355 0707 Calls to this number are charged at the local rate.

CITY WARDEN SERVICES



Email: city.warden@leicester.gov.uk

Website: www.leicester.gov/myaccount



Facebook:
Leicester city wardens



Twitter:
City wardens

These are the main issues that the City Wardens can help with:

- Educating the public and raising awareness of environmental crimes

Enforcement work on the following issues:

- Littering
- Dog fouling, dogs on leads, dogs exclusion from land
 - Bins on the street (domestic and commercial)
- Free distribution of printed material
 - Fly posting
 - Small scale fly tipping
 - Graffiti
- Vehicles for sale on the road
- Repairing vehicles on the road
- Failure to produce waste transfer documents
 - Skips and scaffolding
- Rubbish on private land

FOSSÉ WARD



Leicester
City Council

CITY WARDENS WORKING WITH YOU TO IMPROVE THE CITY'S ENVIRONMENT